

# BEYOND NEW ENGLAND THRESHOLDS



*Haskell House*

*Photographs and Comment*  
*by*  
*SAMUEL CHAMBERLAIN*

HASTINGS HOUSE

NEW YORK CITY



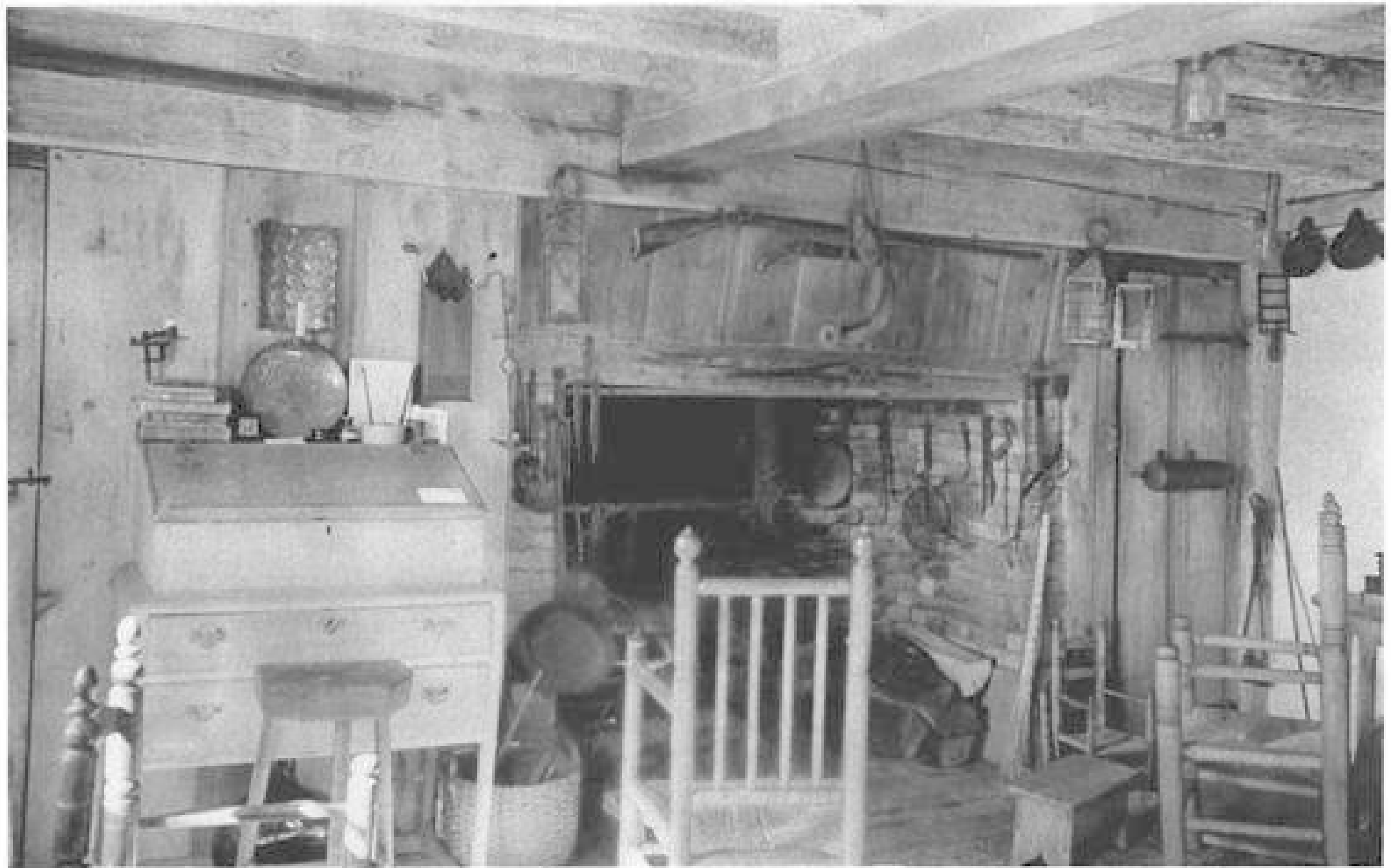
*Haskell House  
(before 1652)  
West Gloucester, Mass.*

This bedroom in the Haskell House, West Gloucester, Mass., has managed to keep its ancient wall boards and beamed ceiling, and still present an inviting interpretation of what we call modern comfort. The fine old highboy adds greatly to the picture.



Another wall of this room reveals a string of posnets hanging below the rafters, a ship model resting on an old spice box, and a primitive applique rug covering the wall above an old bible box. Relics of an adventurous 17th Century all, as are the large slat-back armchairs.

*Haskell House*



A fascinating example of a 17th Century living room is found in the Haskell House. Vertical sheathing is carried over the fireplace lintel, and the battery of cooking utensils becomes truly formidable. It is not difficult to imagine a wizened bookkeeper of the 1660's bent over the high stretcher desk at the left.



Old snowshoes and bear traps recall the rigors of those early winters. This house was built by Richard Window, the official joiner that came in the "Vanitie" with the first colony settlement, landing in 1627. In August 1652 he transferred his property to William Haskell, whose name has been given to the house ever since.



The walls and furniture of this ancient room make a symphony of satiny, lustrous browns and greys, weathered by the smoke of countless hearth fires.

*Haskell House*



Pewter played an important part in these pioneer households. Most of it came from England.

*Haskell House*



A close-up of this fireplace brings out a variety of tongs, skewers and brooms, and Jacobean and Queen Anne braziers, side by side.

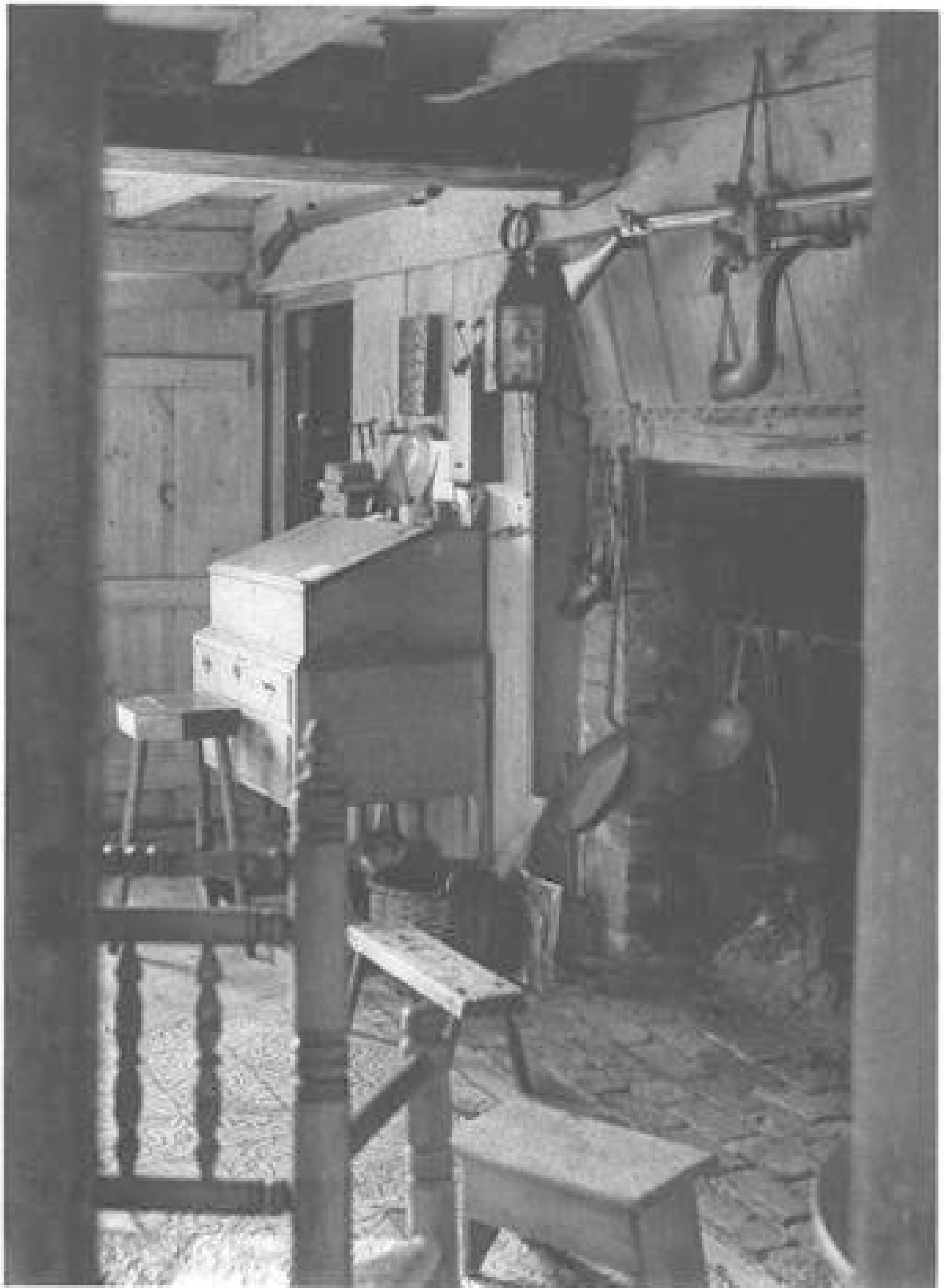
*Haskell House*





*Haskell  
House*

The good housewife needed an imposing battery of kitchen utensils around her fire. There were tongs, trammels and toasters, skillets, skimmers and shovels, broilers, bellows and bed warmers. Not to mention the andirons, ladles, griddles, toddy sticks, and pipe lighters which do not lend themselves to the artifice of alliteration.



*Haskell House*